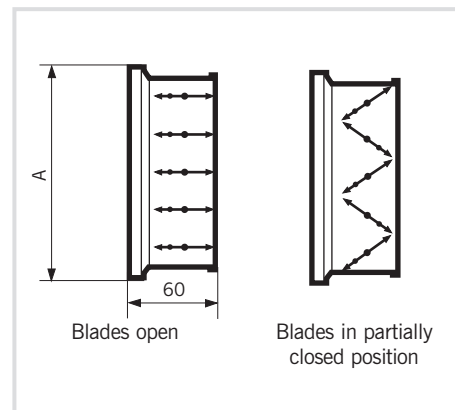
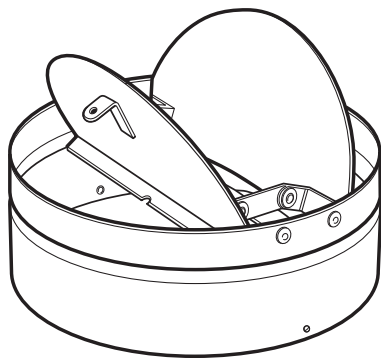


Opposed blade damper (OBD)

Opposed blade dampers (OBD) are the conventional means of regulating air flow through a grille or diffuser. This action ensures that the downstream air flow is non-directional when the

damper is in the partially closed position. OBD dampers have aluminium blades and the frame is left in natural mill finish. Key operated damper.



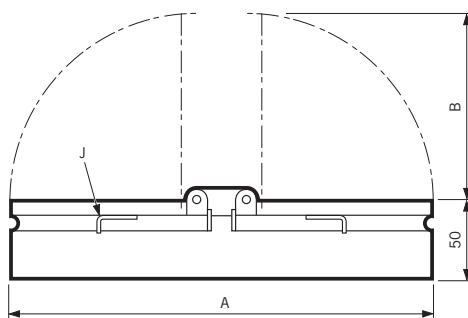
Circular flap damper (CFD)

Circular flap dampers (CFD) are the conventional means of regulating air flow through a Circular Diffuser (CMD) or within the neck of a Perforated Plate Diffuser (PPD/C) with circular necks.

This twin flap damper provides a simple means of regulating the air flow. By closing one flap more than the other a small degree of baffling can be obtained.

CFD dampers are manufactured from zinc steel blade with an aluminium collar and finished black. A tag (J) on each flap allows for adjustment by a simple hooked wire key.

Dimensions



Nom. Size	Dimensions	
	A	B
150	151	57
200	201	83
250	252	108
300	303	133
350	354	159
400	405	184
450	456	210

Dampers are available in nominal diameters from 150mm to 450mm in 50mm increments. Table shows the full range of sizes.